

INSTALLATION MANUAL

69653C

Level of Difficulty

Easy

Installation difficulty levels are based on time and effort involved and may vary depending on the installer level of expertise, condition of the vehicle and proper tools and equipment.

Weight Carrying Capacity

Gross trailer weight (GTW) 4,000 lbs.

Tongue weight (TW) 600 lbs.

Parts List

Item	Qty	Description
1	6	Hex bolt, M12-1.25 x 40mm, CL8.8
2	6	Conical-toothed washer, 1/2"

Tools Required

Torque wrench	Ratchet
Socket extension, 3"	Exhaust removal tool
Socket extension, 6"	Flathead screwdriver
Socket, 3/8"	Wrench, 1" or larger
Socket, 19mm	--

⚠ WARNING

Never exceed the vehicle manufacturer's recommended towing capacity.

Product Photo



NOTICE

Before you begin installation, read all instructions thoroughly.

Proper tools will improve the quality of installation and reduce the time required.

This installation requires:

- Lowering of the spare tire
- Lowering of the exhaust
- Exhaust rod bending
- Part removal

Periodic inspection of the trailer hitch should be performed to ensure all mounting hardware remains tight and structural components are secure.

To help prevent damage to the product or vehicle, refer to the specified torque specifications when securing hardware during the installation process.

Warranty Information

Our products are backed by industry-leading warranties. For a copy of the product warranties or to provide feedback, please contact our support line using the phone number at the bottom of this document.

SAFETY INSTRUCTIONS

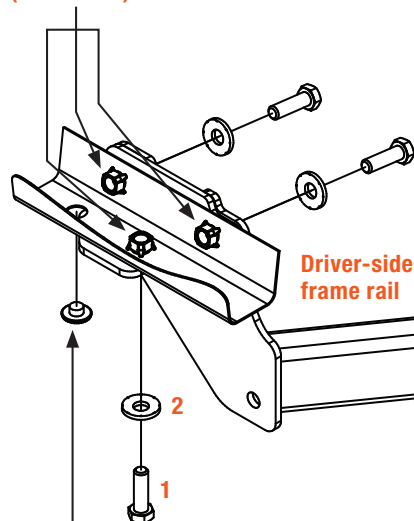
Safety glasses should be worn at all times while installing this product.

ASSEMBLY

Parts List

Item	Qty	Description
1	6	Hex bolt, M12-1.25 x 40mm, CL8.8
2	6	Conical-toothed washer, 1/2"

Existing
M12 weldnuts
(both sides)



Existing
rubber plug
(both sides)

Driver-side
frame rail

Passenger-side
frame rail

Frame rail exhaust
hanger rod

Exhaust
hanger rod
(two places)

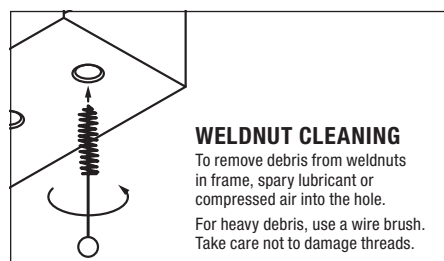
Rubber isolator
(two places)

Exhaust

Rubber
isolator
Exhaust
hanger rods

FRONT

REAR

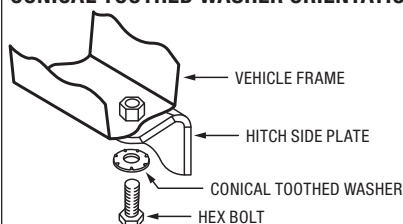


WELDNUT CLEANING

To remove debris from weldnuts in frame, spary lubricant or compressed air into the hole.

For heavy debris, use a wire brush. Take care not to damage threads.

CONICAL TOOTHED WASHER ORIENTATION



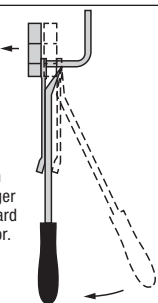
RUBBER ISOLATOR REMOVAL DIAGRAM

This technique can be used if exhaust hanger removal pliers are not available.

Using a 5/8" open end wrench, slide the wrench up to the rubber isolator, cradling the hanger rod as shown.

Place the flat edge of a pry bar between the wrench and the hanger stop or hanger rod. Then simply rotate the pry bar toward the wrench to remove the rubber isolator.

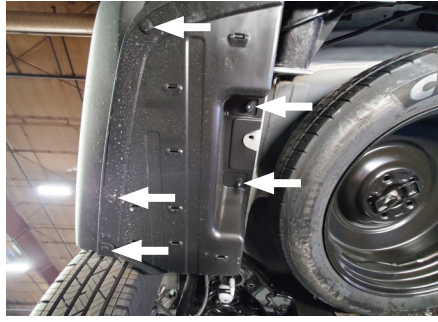
Note: Using a lubricant or soapy water on the hanger rod and the rubber isolator helps removal.



Step 1

For Kia Sorento models only: Remove the plastic cover by removing the three lower plastic clips located on driver side near the wheel well and gently pulling straight down.

If the plastic cover cannot be removed by pulling down, unscrew the two upper plastic nuts by hand until you are able to remove the plastic cover. Set the plastic cover aside for reinstallation in Step 6.



Step 2

For models with a spare tire: Loosen the spare tire carrier nut using a 3/8" socket. Lower the spare tire and set aside for reinstallation in Step 6.



Step 3

All models: Lower the exhaust by removing the four rearmost exhaust hanger rods from the three rubber isolators. Use a stand to support the exhaust and prevent any damage.

The exhaust will be reinstalled in Step 6.



Step 4

All models: Remove one rubber plug from the bottom of the frame rail on both sides. Return to the owner.



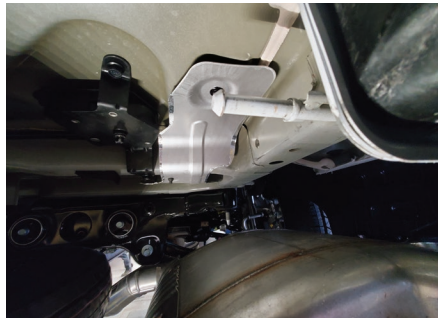
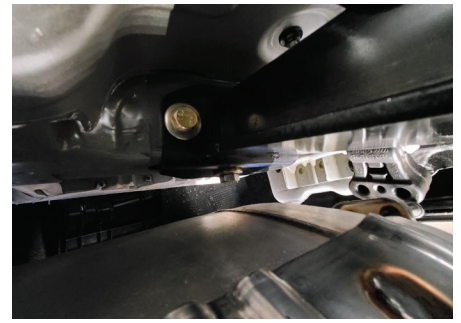
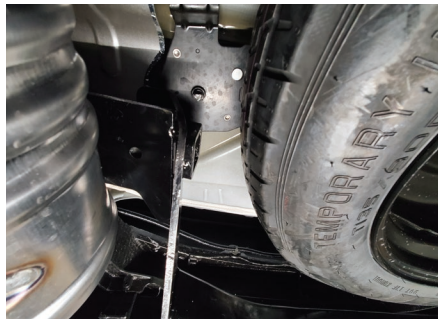
Step 5

All models: Raise the trailer hitch into position by sliding the passenger side of the hitch over the exhaust first. On both sides of the vehicle, align the three holes in the hitch with the three weld nuts in the frame rail.

Loosely install three hex bolts (#1) and three conical washers (#2) into the hitch holes and weld nuts on both sides.

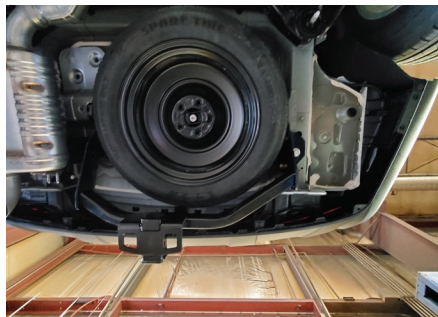
Torque all M12 fasteners to 60 ft-lbs.

Note: After installation, inspect the hitch and exhaust to make sure there is adequate clearance. If additional clearance is needed between the hitch and exhaust, remove the rearmost rubber isolator from the frame-rail exhaust hanger rod. Adjust the rail exhaust hanger rod down approximately five degrees using a box end wrench as shown. Reinstall the rubber isolator.



Step 6

All models: Reinstall the plastic cover, spare tire and exhaust removed in Steps 1 through 3.



Final Installed Image

